

RS	DEZ 23	JAN	FEV	MAR	ABR	MAI	JUN	JUL	AGO	SET	OUT	NOV	DEZ	DEZ/NOV	2024	2023	VAR %	DEZ/DEZ
A) Autos	8.879	6.169	6.071	7.547	8.236	2.973	9.114	10.401	9.980	9.254	10.746	9.507	10.658	12,11%	Acum	Acum	Acum	VAR %
B) Com Leves	2.439	1.791	1.608	1.964	2.334	848	2.612	2.720	2.801	3.606	3.705	3.079	3.079	-1,22%	100.812	94.311	19,33%	20,04%
Subtotal (A+B)	11.318	7.960	7.679	9.511	10.570	3.821	11.726	13.121	12.781	12.860	14.451	12.624	13.737	8,82%	130.790	108.396	20,66%	21,37%
Caminhões	811	665	554	634	737	293	934	979	978	947	1.161	921	1.210	31,38%	10.013	8.267	21,12%	49,20%
Ônibus	76	55	56	73	66	16	118	196	107	81	127	149	229	53,69%	1.273	948	34,28%	201,32%
Motos	2.821	2.840	2.769	3.084	3.351	1.076	4.092	3.476	3.998	3.102	3.339	2.695	3.145	16,70%	36.970	33.295	11,04%	11,45%
Impl. Rodov.	561	445	504	615	578	219	627	648	745	705	755	631	677	7,29%	7.149	6.066	17,85%	20,68%
Outros	877	761	660	701	737	225	1.010	1.107	1.097	1.007	1.095	1.087	1.121	3,13%	10.609	8.789	20,71%	27,82%
Totais	16.464	12.726	12.222	14.618	16.039	5.650	18.507	19.527	19.706	18.702	20.928	18.107	20.119	11,11%	196.804	165.761	18,73%	22,19%
		-22,70%	-3,96%	19,80%	9,72%	-64,77%	227,58%	5,51%	0,92%	-5,09%	11,90%	-13,48%	11,11%					

EMPLACAMENTOS NO BRASIL EM 2024 - Okm

BRASIL	DEZ 23	JAN	FEV	MAR	ABR	MAI	JUN	JUL	AGO	SET	OUT	NOV	DEZ	DEZ/NOV	2024	2023	VAR %	DEZ/DEZ
A) Autos	187.746	118.503	120.303	137.882	164.335	144.014	163.799	178.045	170.985	171.652	195.191	193.718	189.862	-1,99%	1.948.136	1.720.794	13,21%	1,14%
B) Com Leves	48.844	33.553	34.967	38.093	43.739	39.181	38.664	49.247	52.199	51.023	54.695	47.460	53.829	13,92%	536.604	458.498	17,04%	10,22%
Subtotal (A+B)	236.590	152.056	155.270	175.975	208.074	183.195	202.463	227.292	223.184	222.675	249.886	241.178	243.691	1,04%	2.484.740	2.179.292	14,02%	3,01%
Caminhões	10.068	7.993	8.202	9.694	10.549	9.359	9.662	11.081	11.304	11.218	11.902	10.003	11.159	11,56%	122.099	103.994	17,41%	10,92%
Ônibus	1.877	1.546	1.725	2.046	2.184	1.683	2.152	2.960	2.885	2.450	3.139	2.311	2.594	12,25%	27.675	24.621	12,40%	38,20%
Motos	132.752	143.326	136.292	152.667	170.295	164.491	165.855	156.810	163.880	156.606	166.721	147.021	151.925	3,34%	1.875.903	1.581.521	18,61%	14,44%
Impl. Rodov.	7.874	7.074	7.479	7.559	8.037	6.807	7.659	7.860	7.686	7.239	7.689	6.682	6.682	2,07%	88.661	90.365	-1,89%	-13,58%
Outros	10.850	10.511	10.365	10.839	11.470	10.999	12.309	13.741	13.918	12.863	13.478	12.387	12.226	-1,30%	145.101	128.018	13,34%	12,87%
Totais	400.011	322.506	319.334	358.780	410.609	376.534	400.140	419.744	422.857	413.071	452.815	419.582	428.415	2,11%	4.744.179	4.107.811	15,49%	7,11%
		-19,38%	-0,98%	12,35%	14,45%	-8,30%	6,27%	4,90%	0,74%	-2,31%	9,62%	-7,34%	2,11%					

EMPLACAMENTOS ELETRIFICADOS NO RS EM 2024 - Okm

ELETRIFICADOS	JAN	FEV	MAR	ABR	MAI	JUN	JUL	AGO	SET	OUT	NOV	DEZ	NOV/OUT	2024	2023	VAR %	DEZ/DEZ	
AUTOS:																		
A) Híbridos	377	312	368	482	140	470	548	505	500	484	552		14,05%					
B) Elétricos	242	237	356	410	117	361	263	326	309	380	334		-12,11%					
Total Autos	619	549	724	892	257	831	811	831	809	864	886	0	2,55%	0	0			#DIV/0!
COM LEVE:																		
A) Híbridos	1	3	2	2	2	5	3	10	5	13	8		-38,46%					#DIV/0!
B) Elétricos	1	14	0	2	2	5	3	7	5	4	9		125,00%					#DIV/0!
Total COM LEVE	2	17	2	4	4	10	6	17	10	17	17	0	0,00%	0	0			#DIV/0!
Subtotais	621	566	726	896	261	841	817	848	819	881	903	0	2,50%	0	0			#DIV/0!
			-8,86%	28,27%	23,42%	-70,87%	222,22%	-2,85%	3,79%	-3,42%	7,57%	2,50%						

RANKING DE EMPLACAMENTOS DE OKM POR ESTADO EM 2024

ESTADO	JAN	FEV	MAR	ABR	MAI	JUN	JUL	AGO	SET	OUT	NOV	DEZ	ACUM.	% Part
1º) São Paulo	79.735	80.238	94.855	99.383	89.137	97.731	106.035	101.459	96.169	105.577	98.054	92.093	1.140.496	24,0%
2º) Minas Gerais	35.728	41.337	43.776	59.261	52.624	61.627	57.754	59.170	64.353	72.172	72.232	70.090	690.107	14,5%
3º) Paraná	19.108	18.355	19.572	23.873	21.254	20.488	23.563	27.599	27.117	30.576	30.619	23.711	285.835	6,0%
4º) Rio de Janeiro	19.912	17.455	20.406	25.110	23.091	22.947	23.675	22.962	23.730	24.571	21.077	22.196	267.133	5,6%
5º) Bahia	16.057	14.946	17.643	19.625	18.697	17.082	20.047	19.764	19.305	21.291	18.806	21.231	203.255	4,3%
6º) Santa Catarina	14.960	15.704	17.823	18.425	17.608	17.801	19.674	19.472	18.881	21.858	18.746	20.933	200.940	4,2%
7º) RS	12.726	12.222	14.618	16.039	5.650	18.507	19.527	19.706	18.702	20.928	18.107	20.119	196.804	4,1%
8º) Goiás	13.143	13.241	14.933	17.119	15.615	15.287	15.530	15.957	14.711	15.917	13.486	14.785	179.709	3,8%
9º) Pernambuco	13.510	12.136	13.367	16.517	16.210	13.494	16.116	16.232	15.670	16.066	15.486	15.414	179.318	3,8%
10º) Ceará	9.577	7.705	9.452	7.746	15.214	13.636	12.051	13.368	12.475	13.109	12.627	13.070	140.031	3,0%
Totais	322.506	319.334	358.780	410.609	376.534	400.140	419.744	422.857	413.071	452.815	419.582	428.415	4.744.179	100,0%

EMPLACAMENTO NOS MUNICÍPIOS POR SEGMENTO

AUTOS	Quant.	Part. %
Porto Alegre	2.631	24,69%
Caxias do Sul	543	5,09%
Canoas	392	3,68%
Pelotas	366	3,43%
Santa Maria	344	3,23%
Passo Fundo	319	2,99%
N. Hamburgo	304	2,85%
Sta Cruz do Sul	247	2,32%
Bento Gonçalves	223	2,09%
Gravataí	216	2,03%

Com Leve	Quant.	Part. %
Porto Alegre	306	9,94%
Caxias do Sul	133	4,32%
Pelotas	91	2,90%
Passo Fundo	86	2,79%
Santa Maria	77	2,50%
Canoas	67	2,18%
Ijuí	52	1,69%
N. Hamburgo	51	1,66%
Sta Cruz Sul	47	1,53%
B. Gonçalves	46	1,49%

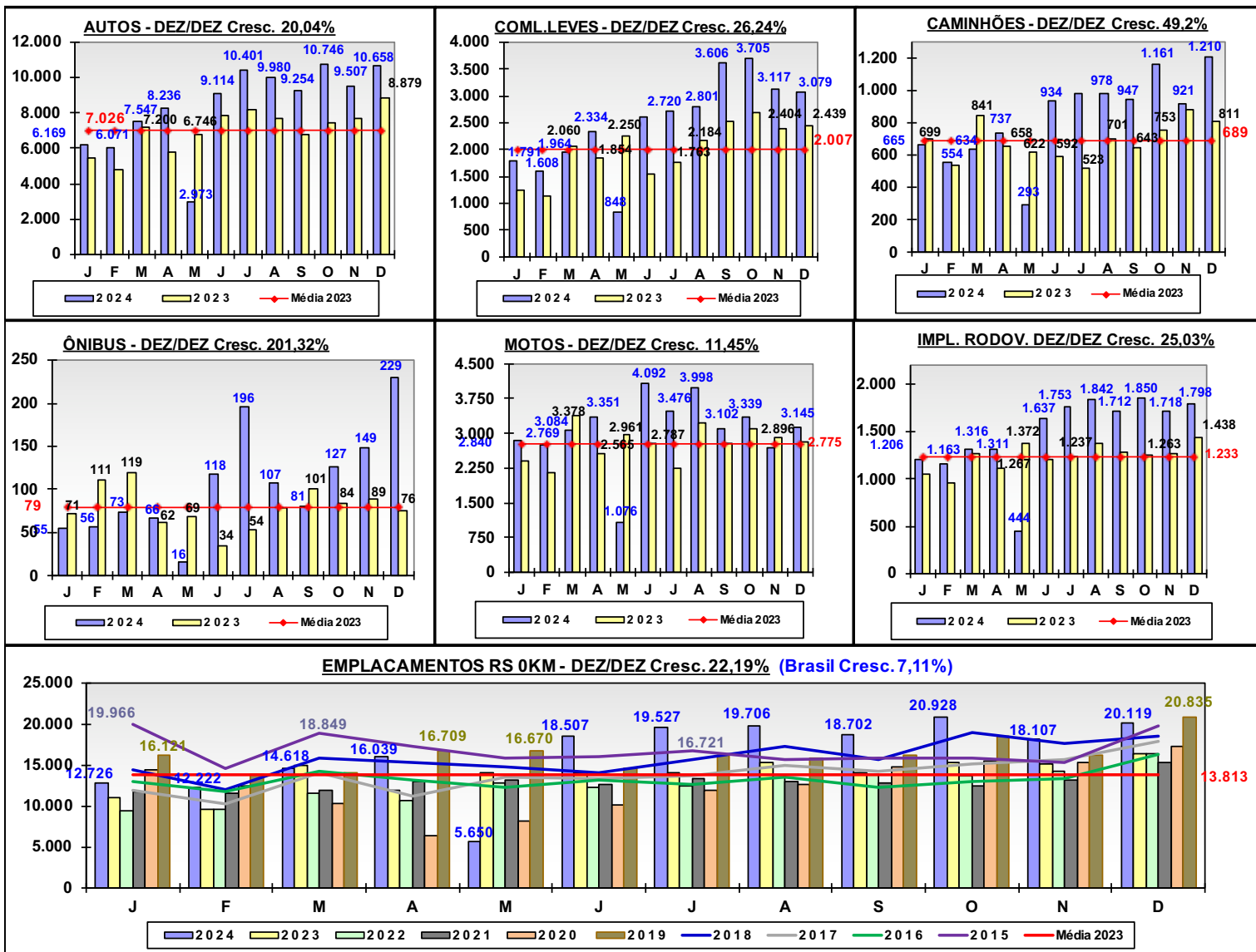
Caminhões	Quant.	Part. %
Porto Alegre	245	20,25%
Ijuí	66	5,45%
Canoas	59	4,88%
Estrela	45	3,72%
São Leopoldo	45	3,72%
Nova Sta Rita	34	2,81%
Caxias do Sul	27	2,23%
Eldorado Sul	25	2,07%
Sta Cruz Sul	24	1,98%
Cachoeirinha	23	1,90%

MOTOS	Quant.	Part. %
Porto Alegre	494	15,71%
Caxias do Sul	142	4,52%
Canoas	130	4,13%
Passo Fundo	107	3,40%
Pelotas	94	2,99%
Viamão	79	2,51%
Alvorada	76	2,42%
Gravataí	73	2,32%
N. Hamburgo	65	2,07%
Santa Maria	65	2,07%

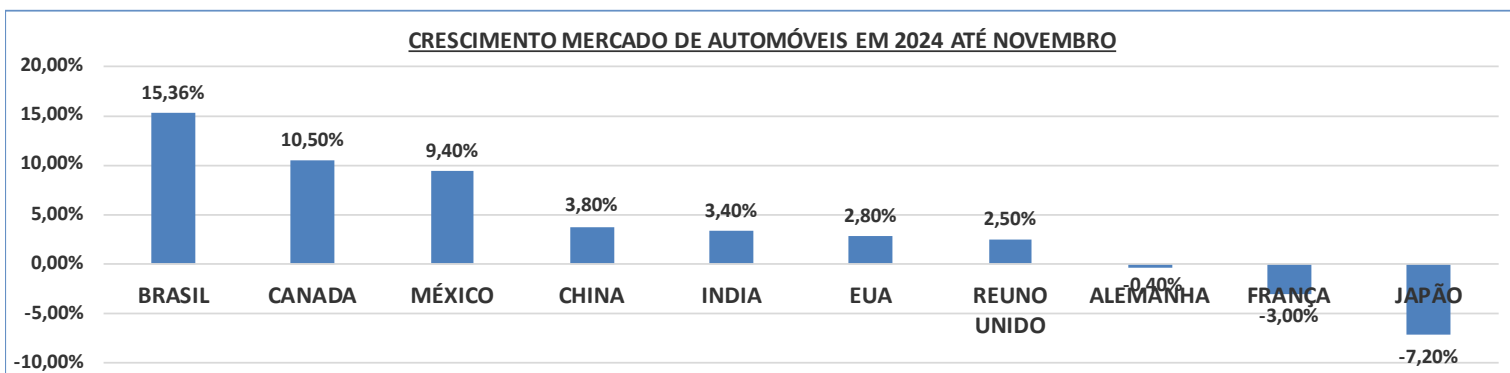
ÔNIBUS	Quant.	Part. %
Porto Alegre	84	36,68%
Canoas	16	7,06%
Caxias do Sul	14	6,11%
Pelotas	10	4,37%
Alvorada	7	3,06%
Charqueadas	5	2,18%
Nova Bassano	5	2,18%
Eldorado do Sul	4	1,75%
Esteio	4	1,75%
Rio Grande	4	1,75%

Fonte: FENABRAVE

DEZEMBRO 24



Fonte: FENABRAVE



Fonte: G1

COMPARATIVO EMPLACAMENTOS RS E SC - Okm

DEZEMBRO 24

RS	2011	2012	2013	2014	2015	2016	2017	2018	2019	2020	2021	2022	2023
A) Autos	168.961	191.691	190.389	161.444	128.179	99.217	107.221	121.128	121.260	87.142	77.002	74.851	84.312
B) Coml Leves	46.748	51.028	57.535	59.208	22.959	20.193	21.389	23.683	23.863	17.946	20.932	18.383	24.081
Subtotal A+B	215.709	242.719	247.924	220.652	151.138	119.410	128.610	144.811	145.123	105.088	97.934	93.234	108.396
Caminhões	11.863	9.434	12.020	9.854	5.203	3.665	3.641	5.410	7.443	6.516	10.560	10.483	8.268
Ônibus	1.823	1.590	1.793	1.566	1.127	841	578	841	1.112	712	739	891	948
Motos	63.600	54.987	46.026	39.606	31.716	23.628	22.301	27.179	29.491	23.810	30.240	32.697	33.294
Impl. Rodov.	3.847	3.436	5.644	4.649	2.465	1.805	1.816	2.730	4.149	4.180	5.277	4.566	6.066
Outros	8.628	9.359	9.709	10.146	9.884	9.383	9.229	9.151	8.735	8.853	9.441	8.645	8.790
Totais RS	305.470	321.525	323.116	286.473	201.533	158.732	166.175	190.122	196.053	149.159	154.191	150.516	165.762
VAR %		5,26%	0,49%	-11,34%	-29,65%	-21,24%	4,69%	14,41%	3,12%	-23,92%	3,38%	-2,38%	10,13%

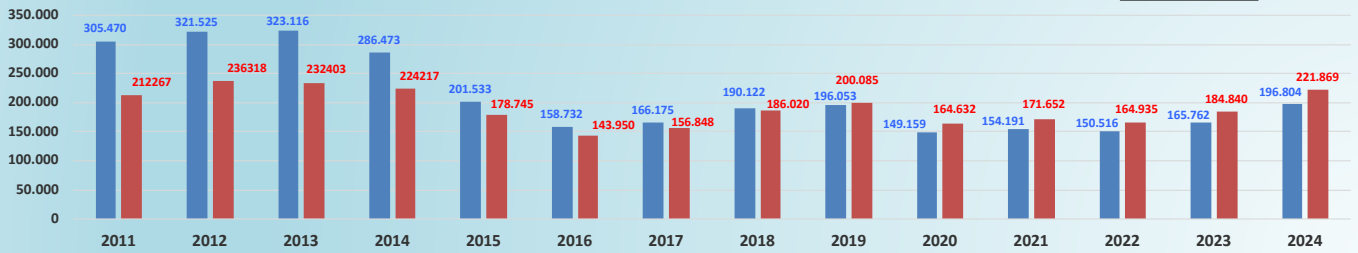
2024	2024	%
RS	SC	
100.612	100.323	0,29%
30.178	26.353	12,67%
130.790	126.676	3,15%
10.013	11.307	-12,92%
1.273	927	27,18%
36.970	58.498	-58,23%
7.149	11.193	-56,57%
10.609	13.268	-25,06%
196.804	221.869	-12,74%

SC	2011	2012	2013	2014	2015	2016	2017	2018	2019	2020	2021	2022	2023
(*) Parcial	212.267 *	236.318 *	232.403 *	224.217 *	178.745	143.950	156.848	186.020	200.085	164.632	171.652	164.935	184.840
Totais SC	212.267 *	236.318 *	232.403 *	224.217 *	178.745	143.950	156.848	186.020	200.085	164.632	171.652	164.935	184.840
VAR %		11,33%	-1,66%	-3,52%	-20,28%	-19,47%	8,96%	18,60%	7,56%	-172,72%	4,27%	-3,91%	11,46%

2024	2023	%
Acum.	Acum.	Cresc.
221.869	183.830	20,69%
196.804	165.761	18,73%
-12,74%	-10,90%	

COMPARATIVO	2011	2012	2013	2014	2015	2016	2017	2018	2019	2020	2021	2022	2023
(*) Parcial	212.267 *	236.318 *	232.403 *	224.217 *	178.745	143.950	156.848	186.020	200.085	164.632	171.652	164.935	183.840
SC	212.267 *	236.318 *	232.403 *	224.217 *	178.745	143.950	156.848	186.020	200.085	164.632	171.652	164.935	183.840
RS	305.470	321.525	323.116	286.473	201.533	158.732	166.175	190.122	196.053	149.159	154.191	150.516	165.762
VAR %	30,51%	26,50%	28,07%	21,73%	11,31%	9,31%	5,61%	2,18%	-2,06%	-10,37%	-11,32%	-9,58%	-9,83%

COMPARATIVO EMPLACAMENTOS RS E SC - Okm



EMPLACAMENTOS NO RIO GRANDE DO SUL EM 2024 - Okm

(QUANT. POR DIAS ÚTEIS)

RS	JAN	FEV	MAR	ABR	MAI	JUN	JUL	AGO	SET	OUT	NOV	DEZ
DIAS ÚTEIS	26	22	25	26	25	25	27	27	23	26	23	25
A) Autos	237	276	302	317	119	365	385	370	402	413	414	426
B) Coml Leves	69	62	79	90	34	104	101	104	157	142	136	123
Subtotal A+B	306	349	380	407	153	469	486	533	559	556	549	549
Caminhões	26	25	25	28	12	37	36	36	41	45	307	48
Ônibus	2	3	3	3	1	5	7	4	4	5	6	9
Motos	109	126	123	129	43	164	129	148	135	128	117	126
Impl. Rodov.	17	23	25	22	9	25	24	28	31	29	27	27
Outros	29	30	28	28	9	40	41	41	44	42	47	45
EMPLACAMENTO	490	555	585	617	226	740	723	730	813	805	787	805

EMPLACAMENTOS NO BRASIL EM 2024 - Okm

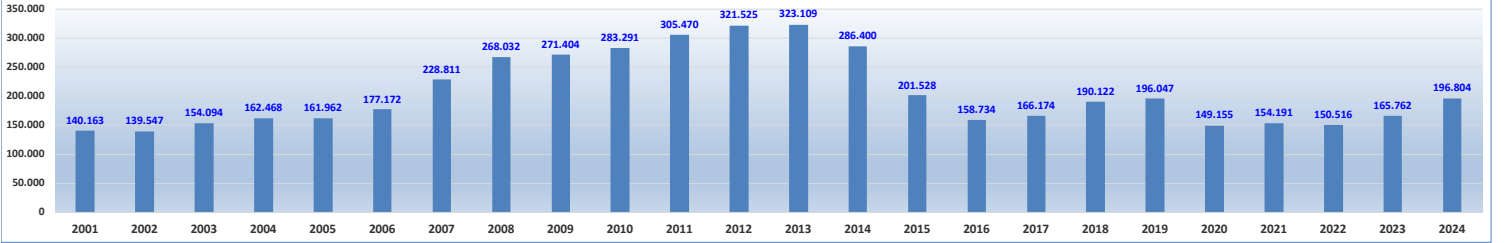
(QUANT. POR DIAS ÚTEIS)

BRASIL	JAN	FEV	MAR	ABR	MAI	JUN	JUL	AGO	SET	OUT	NOV	DEZ
DIAS ÚTEIS	26	23	25	26	25	25	27	27	24	26	23	25
A) Autos	4.558	5.231	5.516	6.322	5.761	6.552	6.594	6.333	7.152	7.508	8.423	7.594
B) Coml Leves	1.291	1.520	1.524	1.681	1.567	1.547	1.824	1.933	2.126	2.104	2.064	2.153
Subtotal A+B	5.849	6.751	7.039	8.003	7.329	8.099	8.419	8.267	9.278	9.611	10.487	9.748
Caminhões	307	357	388	406	374	387	410	419	467	458	435	446
Ônibus	59	75	82	84	67	86	110	107	102	121	100	104
Motos	5.513	5.925	6.107	6.548	6.580	6.634	5.811	6.070	6.525	6.412	6.392	6.077
Impl. Rodov.	272	325	302	308	273	308	291	285	302	296	291	273
Outros	404	451	434	440	440	492	509	515	537	518	539	489
EMPLACAMENTO	12.404	13.884	14.352	15.790	15.063	16.006	15.549	15.662	17.212	17.416	18.243	17.137

EVOLUÇÃO DO EMPLACAMENTOS NO RIO GRANDE DO SUL - Okm

ESTADO RS	2001	2002	2003	2004	2005	2006	2007	2008	2009	2010	2011	2012	2013	2014	2015	2016	2017	2018	2019	2020	2021	2022	2023	2024	Var. %
A) Autos	82.521	77.124	77.353	78.798	78.343	80.129	105.960	132.379	155.494	157.527	168.961	191.682	190.389	183.101	128.176	99.215	107.236	121.128	121.255	87.140	77.003	74.851	84.312	100.612	19,33%
B) Coml Leves	16.992	14.254	13.492	13.407	13.475	13.619	20.016	27.363	32.203	40.237	46.748	51.036	57.535	37.547	22.957	20.193	21.373	23.683	23.863	17.945	20.936	18.383	24.084	30.178	25,30%
Subtotal A+B	99.513	91.378	90.845	92.205	91.818	93.748	125.976	159.742	187.697	197.764	215.709	242.718	247.924	220.648	151.133	119.408	128.609	144.811	145.118	105.085	97.939	93.234	108.396	130.790	20,66%
Caminhões	5.012	4.372	4.722	6.675	6.607	4.793	6.248	7.937	7.598	10.998	11.863	9.442	11.932	9.854	5.203	3.667	3.641	5.410	7.442	6.515	10.560	10.483	8.268	10.013	21,11%
Ônibus	1.135	1.048	748	979	983	1.008	1.033	1.566	1.125	1.401	1.823	1.565	1.874	1.567	1.127	841	578	841	1.112	712	733	891	948	1.273	34,28%
Motos	34.503	42.749	57.779	62.609	62.554	77.623	88.793	89.674	66.709	62.162	63.600	54.991	46.026	39.807	31.716	23.628	22.301	27.179	29.491	23.810	30.240	32.697	33.294	36.970	11,04%
Impl. Rodov.	ND	ND	ND	ND	ND	ND	6.761	4.071	2.699	3.999	3.847	3.438	5.644	4.259	2.465	1.805	1.704	2.730	4.152	4.182	5.277	4.566	6.066	7.149	17,85%
Outros	ND	ND	ND	ND	ND	ND	ND	5.042	5.576	6.947	8.628	9.362	9.709	10.465	9.884	9.385	9.341	9.151	8.732	8.851	9.441	8.645	8.790	10.609	20,69%
TOTAIS RS	140.163	139.547	154.094	162.468	161.962	177.172	228.811	268.032	271.404	283.291	305.470	321.516	323.109	286.400	201.528	158.734	166.174	190.122	196.047	149.155	154.191	150.516	165.762	196.804	18,73%
VAR %		-0,44%	10,42%	5,43%	-0,31%	9,39%	29,15%	17,14%	1,26%	4,38%	7,83%	5,25%	0,50%	-11,36%	-29,63%	-21,23%	4,69%	14,41%	3,12%	-23,92%	3,38%	-2,38%	10,13%	18,73%	

EVOLUÇÃO DO EMPLACAMENTO NO RS - Okm



Fonte: FENABRAVE

EVOLUÇÃO DO EMPLACAMENTOS NO BRASIL - Okm

BRASIL	2001	2002	2003	2004	2005	2006	2007	2008	2009	2010	2011	2012	2013	2014	2015	2016	2017	2018	2019	2020	2021	2022	2023	2024	Var. %
A Autos	1.232.849	1.150.568	1.173.123	1.258.440	1.369.375	1.556.231	1.977.135	2.195.499	2.479.457	2.651.584	2.649.032	2.841.862	2.755.085	2.795.129	2.122.624	1.888.112	1.856.227	2.101.635	2.261.745	1.615.528	1.557.808	1.576.960	1.720.794	1.948.136	13,21%
B) Com Lveas	273.342	240.604	177.815	220.529	251.292	274.171	364.924	475.139	530.025	671.366	776.564	792.594	829.891	533.992	354.199	298.151	315.965	368.370	396.947	335.226	416.494	380.739	458.498	536.024	17,04%
Subtotal A+B	1.506.891	1.391.202	1.350.938	1.478.969	1.620.667	1.830.402	2.342.059	2.671.338	3.009.482	3.328.950	3.425.596	3.634.456	3.575.886	3.329.121	2.476.823	1.986.303	2.172.192	2.470.005	2.658.692	1.950.754	1.974.402	1.957.699	2.179.292	2.484.160	14,02%
Caminhões	63.028	58.653	66.427	82.326	78.943	76.489	98.895	123.283	109.146	157.409	172.661	137.752	154.554	137.052	71.767	50.292	52.068	76.426	101.733	89.173	127.281	124.584	103.994	122.099	17,41%
Ônibus	17.193	16.682	15.997	17.462	15.124	18.422	22.151	26.336	22.598	28.546	34.749	29.546	36.739	32.042	20.342	13.845	15.099	19.572	27.193	18.219	17.712	21.960	24.621	27.675	12,40%
Motos	679.262	769.262	840.703	896.433	1.027.424	1.267.290	1.708.640	1.925.514	1.609.251	1.803.772	1.940.564	1.637.507	1.515.687	1.429.929	1.273.252	998.021	851.199	940.394	1.077.537	915.473	1.157.291	1.362.129	1.581.521	1.875.903	18,61%
Impl. Rodov.	48.974	53.364	56.542	68.172	61.349	61.628	35.620	51.337	40.254	98.812	58.557	52.110	69.478	66.820	30.016	23.682	25.041	44.889	63.498	67.392	90.398	83.185	90.365	88.681	-1,89%
Outros	32.833	39.238	35.838	37.891	19.277	19.669	41.110	51.689	52.299	66.656	83.153	95.154	106.184	111.653	119.565	102.655	101.131	102.211	107.393	121.643	129.754	117.910	128.918	145.101	13,34%
TOTALS BRASIL	2.347.981	2.328.401	2.366.445	2.580.442	2.822.774	3.273.891	4.248.275	4.849.497	4.843.030	5.444.145	5.715.280	5.586.525	5.458.528	5.096.207	3.982.765	3.174.598	3.216.730	3.653.297	4.036.046	3.162.654	3.496.838	3.667.367	4.107.811	4.744.179	15,49%
VAR %		-0,83%	1,63%	9,04%	9,39%	15,98%	29,76%	14,15%	-0,13%	12,41%	4,88%	-2,25%	-2,29%	-6,64%	-21,85%	-20,29%	1,33%	13,58%	10,46%	-21,64%	10,57%	4,88%	12,01%	15,49%	

EVOLUÇÃO DO EMPLACAMENTO NO BRASIL - Okm



Fonte: FENABRAVE